



Next Generation SDN media network



Steven Soenens
VP Product Marketing

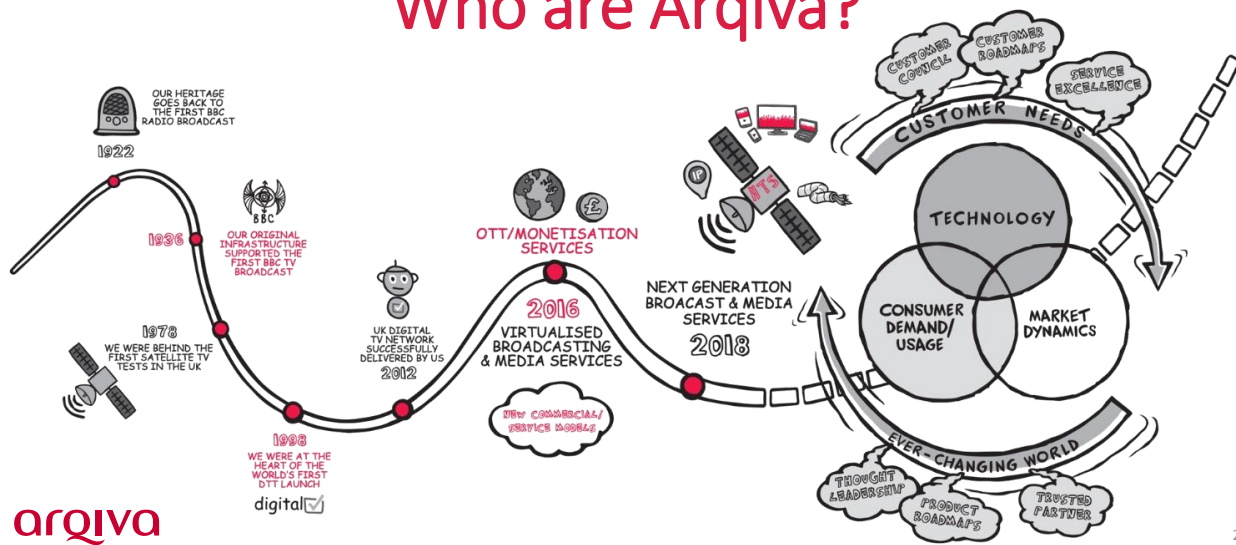


Nathan Dixon
Principal Consultant

IP SHOWCASE THEATRE AT IBC - SEPT. 14-18, 2018



Who are Arqiva?





Why it's time to evolve

Commercial flexibility – Enables new opportunities and opens new markets

Faster delivery of services – Catalogue based, right first time service deployment


Flexible infrastructure - Enables us to adapt quickly to customer and technology evolution

Location agnostic – flexibility to move functions to the most appropriate location

Vendor agnostic - select vendors based on strengths

arqiva

3



Arqiva's technology principles

Embrace IP and industry standards

Implement software-defined networking and functions

Use COTS and Cloud infrastructure where appropriate


Orchestrate and automate, via APIs

Become location agnostic

Bake-in security

arqiva

4



Automation is key to delivering our vision

- The technology is becoming more complicated
- A need to deliver services quickly
- Enables more efficient use of assets
- Spends less time on repetitive tasks and get it right first time
- Ensures security policies can be efficiently managed
- Lowers the costs of delivering services

arqiva

5




We set ourselves a goal...

“I look forward to June 2019 when we are able to instantaneously provision and manage secure broadcast grade services, through the art of a “drag and drop” for our customers, using software defined networks and common IT equipment”

Keith Frost, Arqiva Media and Data Networks Director - Jan 2017

arqiva

6




Building our All-IP foundations

Reprogrammable, flexible media edge, enabling a hybrid IP and SDI environment


Off-the-shelf, high performance Ethernet switching

- ▶ End-to-end service orchestration
- ▶ Service & Infrastructure management
- ▶ Capacity management
- ▶ Vendor agnostic, open interfaces
- ▶ Secure, intuitive user interface



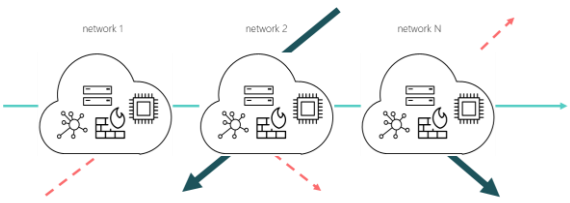
arqiva

7




End-to-end multi-domain orchestration

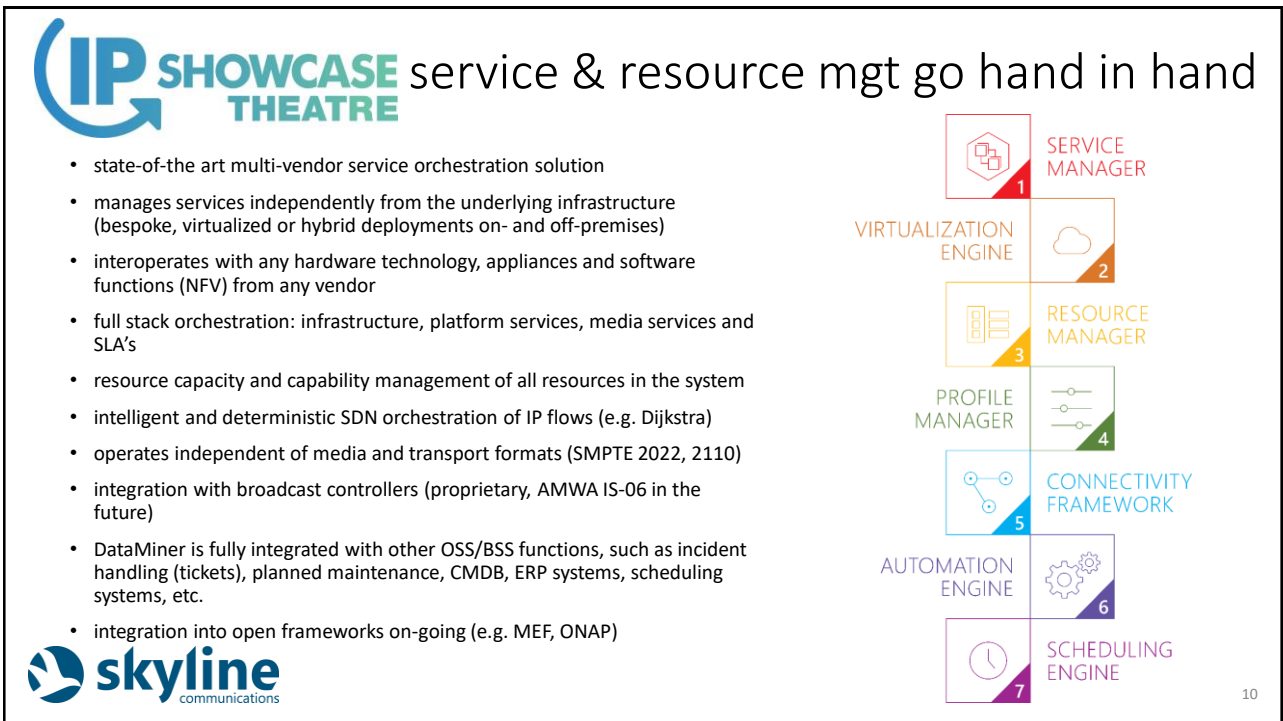
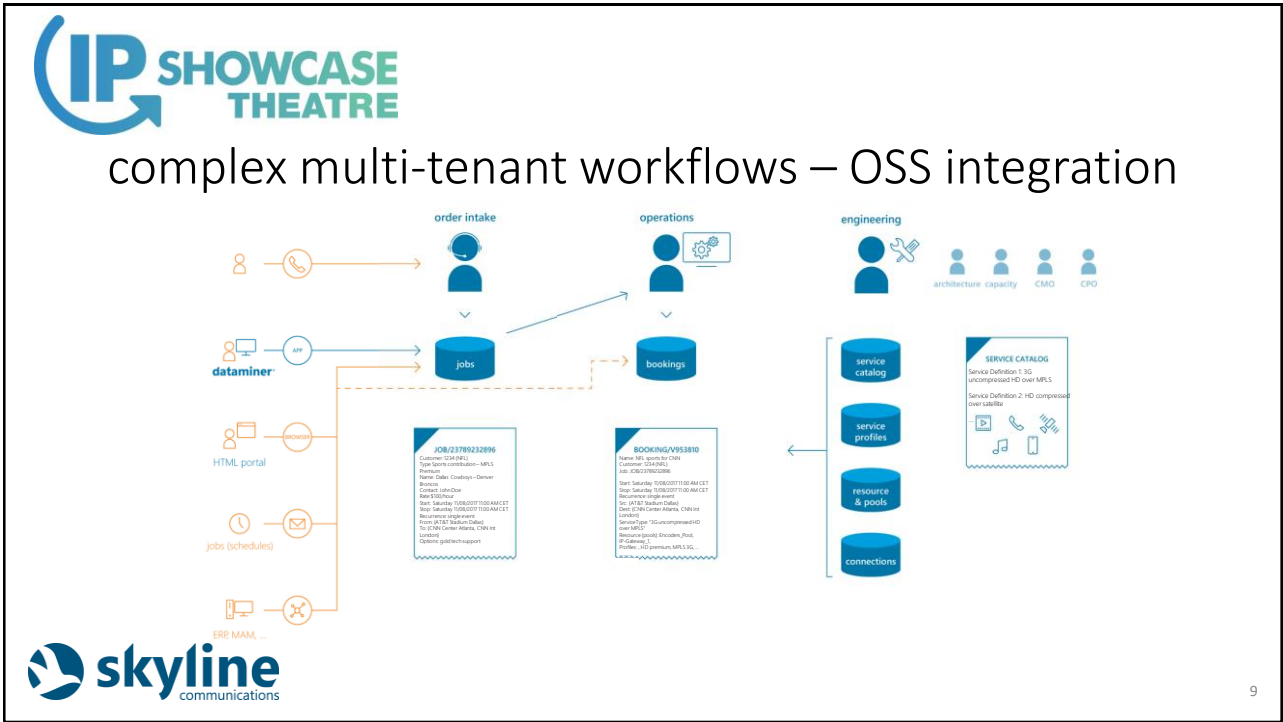
- complex multi-domain lifecycle service orchestration (LSO)
- multiple technologies & vendors
- multi-tenant operation
- globally interconnected - massive scale
- multi domain (networks and edges)
- multi-service & SDN controlled
- requires intelligent routing algorithms (e.g. lowest cost path – Dijkstra)
- NFV at the edges (dyn. deployment models)
- requires advanced resource management (availability, capability, capacity)



- Flow monitoring based on sFlow, netflow, routing tables, snooping tables, LLDP, etc.... : multiple sources from multiple API's
- Standardization still on-going (AMWA, ONAP, MEF, ...), so need a solution that can evolve easily



8





service & resource mgt go hand in hand

model



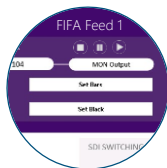
use drag & drop to easily model and design e2e services, straight across any vendor and technology boundaries

instantiate



provision services automatically into your operation, instantly or on a scheduled basis, without worrying about capabilities or availability of resources throughout your entire ecosystem

manage



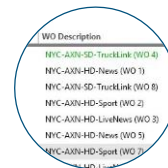
intuitively control any of your active services instantly with the click of a button in a uniform manner, across all type of services and parts of your operation

monitor



proactively monitor all your active services e2e with powerful graphical presentations, enabling you to interact with all involved resources instantly, and full-featured alarm management

archive



keep track of all historical services, including their performance



Real-time flow setup
 Scheduled flow setup (deterministic)
 Permanent and OU
 Any media format

Status Color	Booking D...	Description (Booking D...	Start Date Time (SMT) L...	End Date Time (SMT) (B...	Pre-Roll (Booking Over...	Post-Roll (Booking Over...	Status (Booking Overv...	Created By (Booking...	Created At (Booking...
		IP Showcase	11/09/2018 18:17:17	12/09/2018 18:27:17	0 min	0 min	Confirmed	Administrator	11/09/2018 18:15:30

Details > IP Showcase

Confirmed

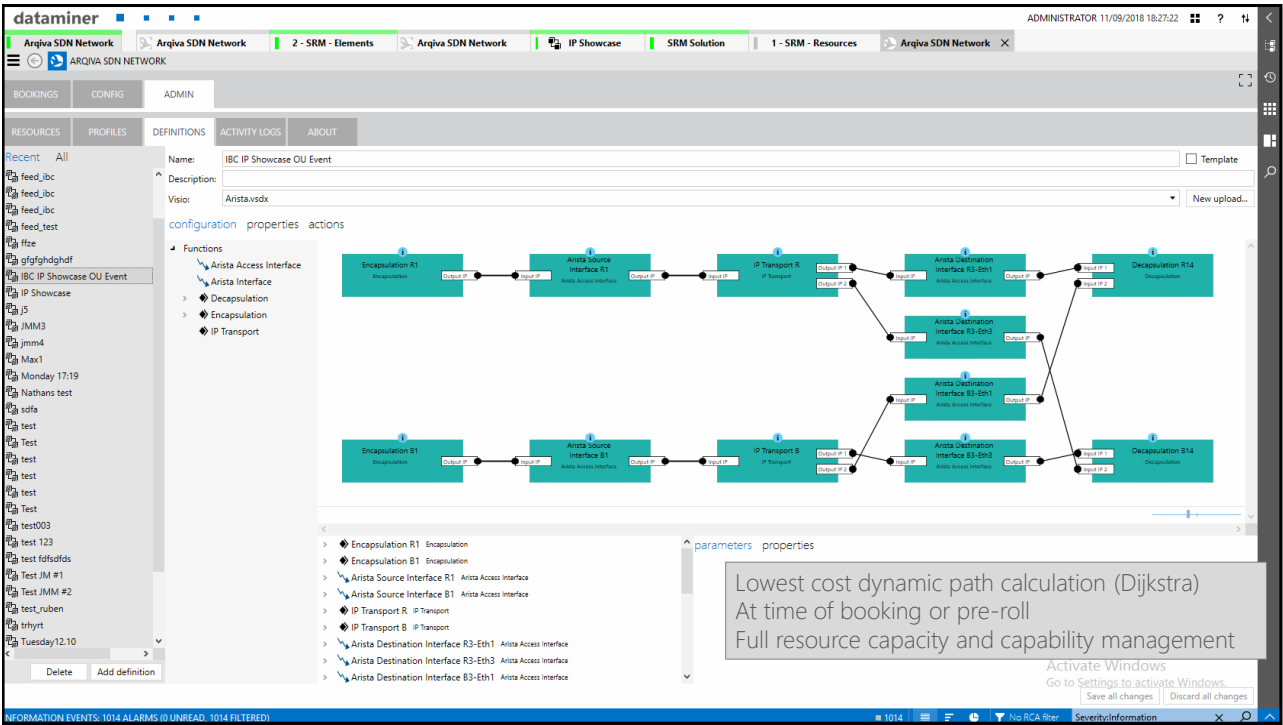
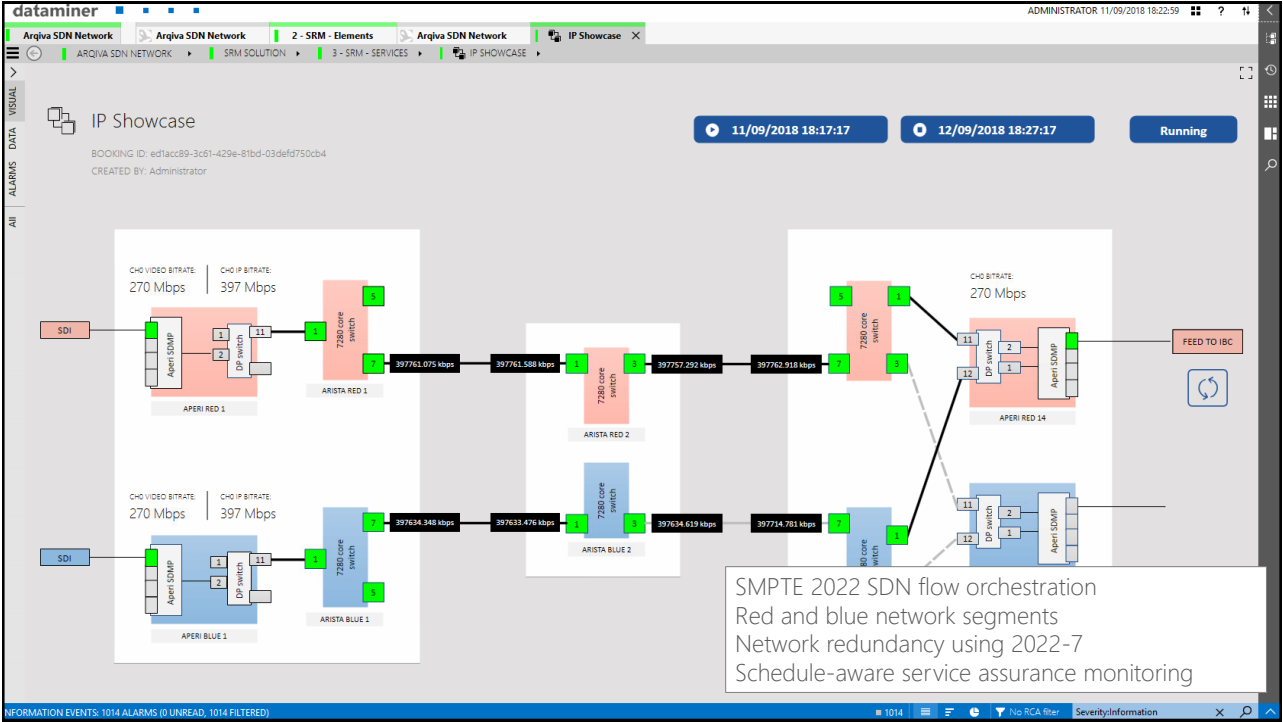
Virtual Platform

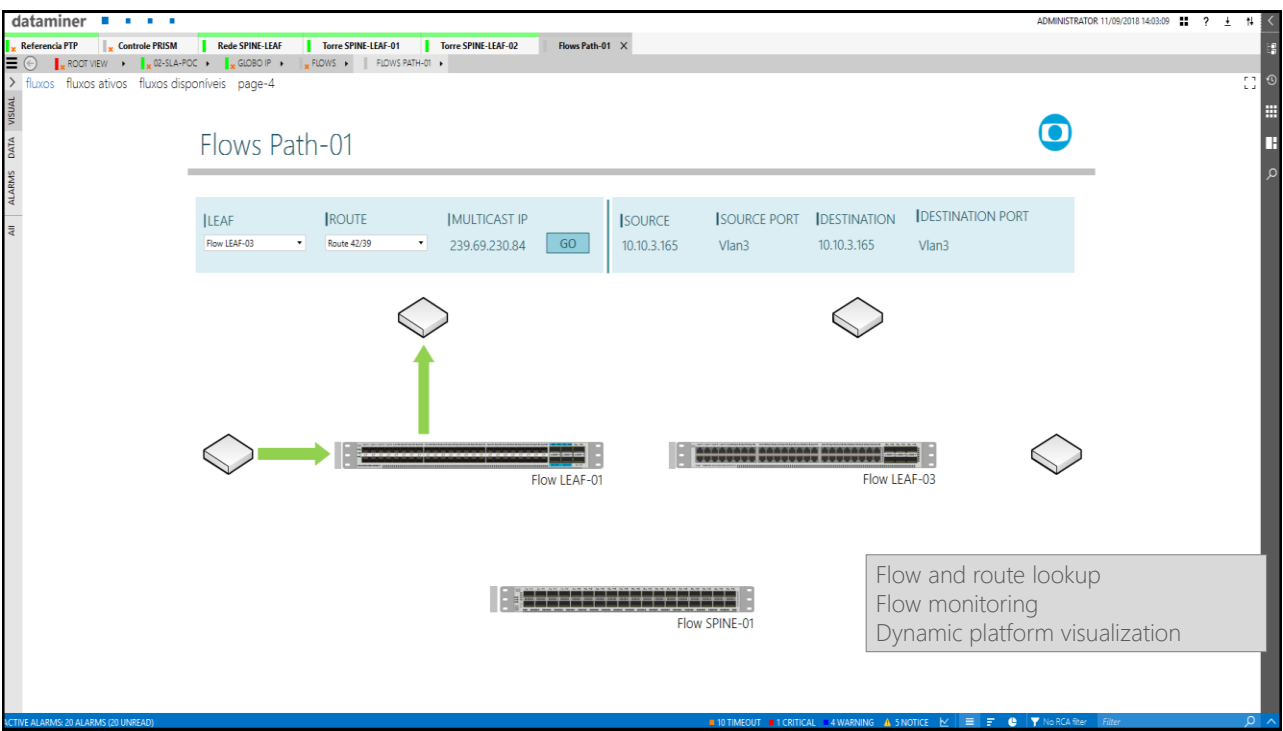
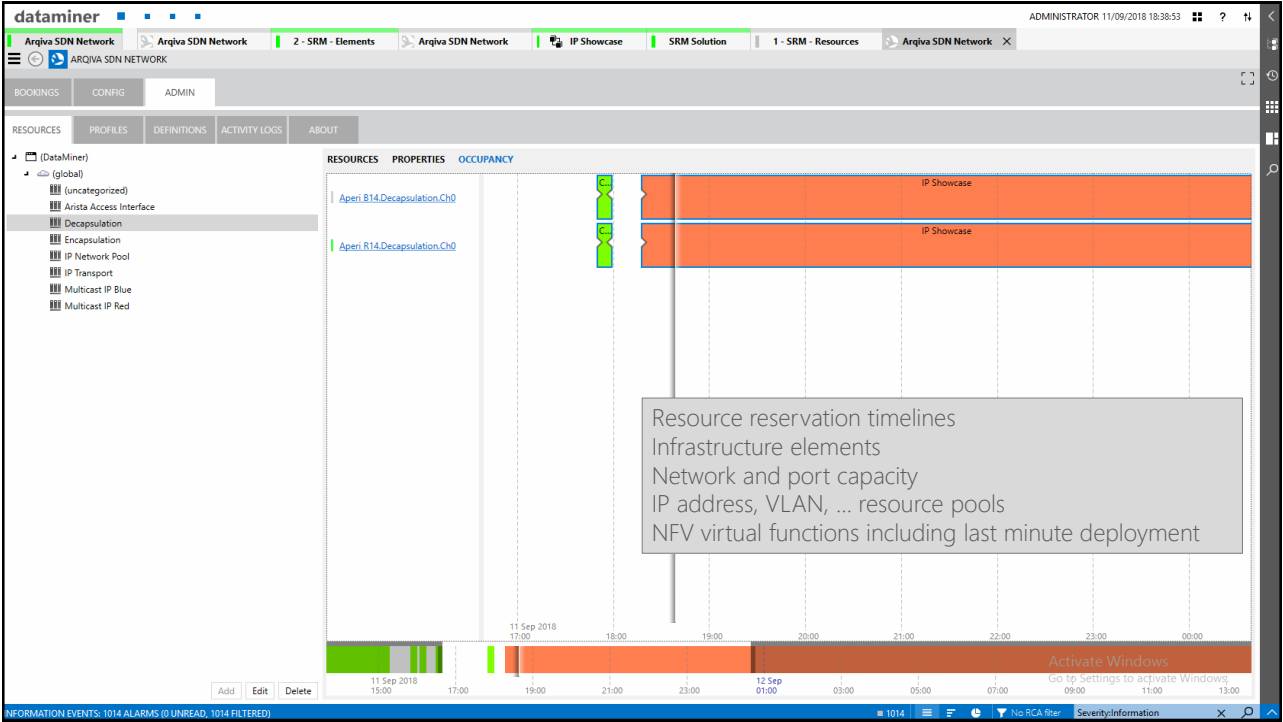
Start time	11/09/2018 18:17:17
Stop time	12/09/2018 18:27:17
Period time	0 min
Post-roll time	0 min
Created by	Administrator
Created at	11/09/2018 18:15:30

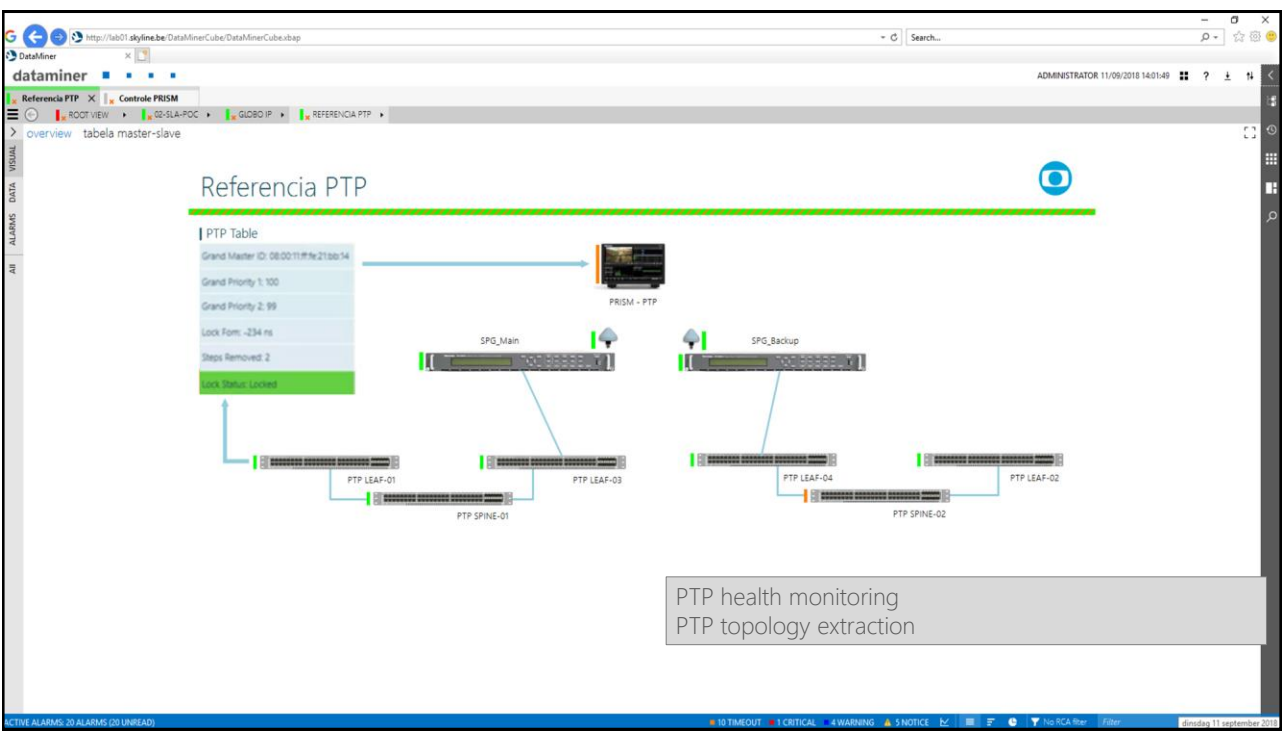
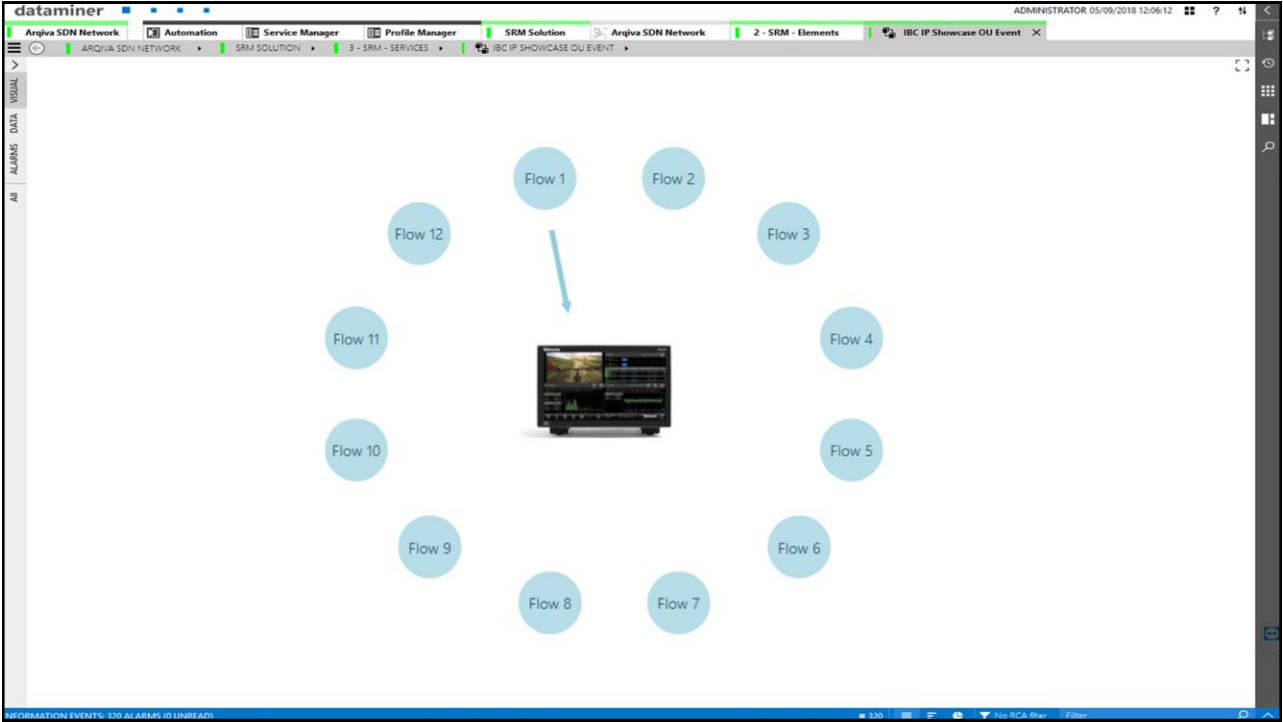
Buttons: CANCEL, DELETE, NEW, EDIT, DUPLICATE

LEGEND: COMPLETED, CONFIRMED, PRE-ROLL, POST-ROLL, RUNNING, FAILED, PENDING, CANCELLED

INFORMATION EVENTS: 1064 ALARMS (1 UNREAD, 1064 FILTERED) | 1064 | No RCA Filter | Severity: Information







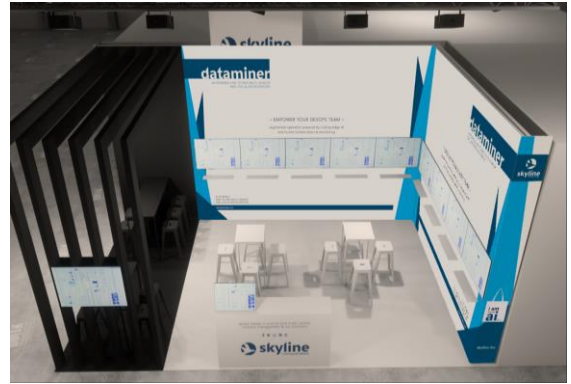
PTP health monitoring
PTP topology extraction



Come and see media over IP action !



1.B61



1.B24



Thank You

arqiva

Nathan Dixon
nathan.dixon@arqiva.com

skyline
communications

Steven Soenens
steven.Soenens@skyline.be

